

DV²

Dual-Channel, Simultaneous-Imaging System

The Photometrics® DV2™ utilizes a single-beamsplitter design to split the emission light from a microscope into two independent channels. Each channel is projected onto half of the CCD at the same time. Simultaneous multichannel imaging is essential for FRET and other emission ratiometric applications.

Features

- Simultaneous acquisition of two emission channels
- Emission can be separated by wavelength, polarization, or amplitude
- Easily mounts to most microscopes
- Improved adjustment control enables easier image alignment
- Redesigned aperture adjustments ensure apertures are parallel
- User standard 25-mm-diameter emission and polarization filters
- Bypass mode permits no-hassle, full-field imaging
- Exchangeable filter cube allows multiple applications to be run with minimal realignment
- Integrated, adjustable CCD mask minimizes ghosting
- Works with many Photometrics® and QImaging® cameras*

* Please contact your local representative to verify compatibility with specific cameras.

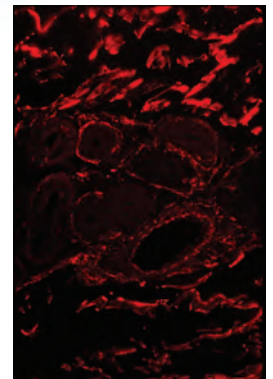
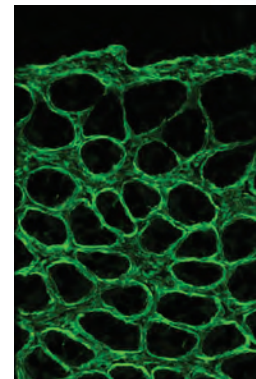
Applications

- Fluorescence resonance energy transfer (FRET) imaging
- Polarized FRET analysis
- Calcuim imaging with fluo-3/Fura Red™ (Molecular Probes) or dual-emission indo-1 imaging
- Fluorescence polarization/anisotropy imaging
- Simultaneous fluorescence/DIC imaging
- Drug discovery with Cy3/Cy5
- Single-molecule fluorescence (SMF) imaging
- pH imaging with SNARF
- Multiwavelength total internal reflection fluorescence (TRIF) imaging
- Voltage sensing with di-4-ANEPPS
- Fluorescence *in situ* hybridization (FISH) imaging
- cAMP imaging with FICRhR
- Multichannel confocal microscopy when used in conjunction with a spinning-disk confocal

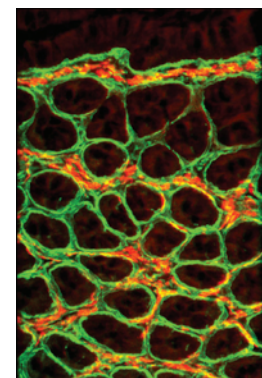


Green

Red



Ratio (Green/Red)



Ratiometric Analysis



DV²

Dual-Channel, Simultaneous-Imaging System

Specifications

Wavelength sensitivity	400 to 750 nm
Efficiency per image*	88 to 92%
Operation temperature	10 to 37°C
Detector attachment	C-mount (male)
Front attachment	C-mount (female)
External mounting option	1/4-20 tapped hole on back of unit
Dimensions	2.5" diameter x 7.5" height
Weight	2.6 lbs
Filters	Emission/barrier, neutral density, polarization; 1" (25.4-mm) max diameter; 0.39" (9.9-mm) max thickness
Patents	USA: 5,926,283 and 5,982,497; Australia: 731,467; Canada: 2,294,840; Other foreign patents pending

*Transmission values are also modified by filter transmission.

Note: All specifications are typical and subject to change.



Photon Technology International

USA: Photon Technology International, Inc., 300 Birmingham Road, PO Box 272 Birmingham, NJ 08011
Tel: 609-894-4420, Fax: 609-894-1579, E-mail: marketing@pti-nj.com, www.pti-nj.com

Canada: Photon Technology International, Inc., 347 Consortium Court, London, Ontario, N6E 2S8
Tel: 519-668-6920, Fax: 519-668-8437, E-mail: sales@pti-can.com

UK: Photon Technology International, Inc., Unit M1 Rudford Industrial Estate, Ford Road, Ford, West Sussex BN180BF
Tel: +44 (0) 1903 719555, Fax: +44 (0) 1903 725722. E-mail: sales@pti-uk.co.uk

Germany: PhotoMed GmbH, Inninger Str. 1, 82229 Seefeld, Germany,
Tel: +49 (0) 8152 993090, Fax: +49 (0) 8152 993098, E-mail: sales@photomed.com